

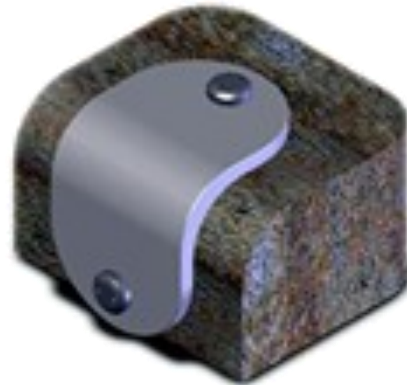


CONTACT INFORMATION:
 4550 145TH STREET
 CHIPPEWA FALLS, WI 54729

PHONE: (715) 723-8444
 CELL: (715) 797-8989
 EMAIL: STOPAGRIND@YAHOO.COM

Series 300 Decorative wall, planter, and curb deterrent

90 DEGREE WALL DETERRENT



Our low profile Series 300 skateboard deterrents and stops can be used on walls, planters, and curbs. The series 300 inside radius is hand bent at 3/4 of an inch to accommodate most walls and planters.

The deterrents are mounted by drilling two holes for the two anchors and screws. For your convince we do offer packages with and without the fasteners.

INSTALLATION AS SIMPLE AS 123

- Drill two holes 1/2" diameter into the base material to a depth equal to, or slightly deeper than, the length of the expansion shield.
- Place the single expansion anchor, nut end first, into the hole. The top end of the anchor should be flush or slightly below the base material surface.
- Place the object to be fastened over the anchor in the base material and bolt into place. The bolt should engage 2/3 of the threads of the anchor.

Anchor Size	Anchor Length	Hole Size	Bolt Dia.	Pull-Out Concrete
1/4"	1-5/16"	1/2"	1/4"	1600 lbs.

Series 200 Product Specs:

- 6061 ALUM. ••Screw size 1/4-20
- SIZE 2.50" x 2 .50" x 3/16"



Concrete Anchor



Tamper Res.



Installation Bit